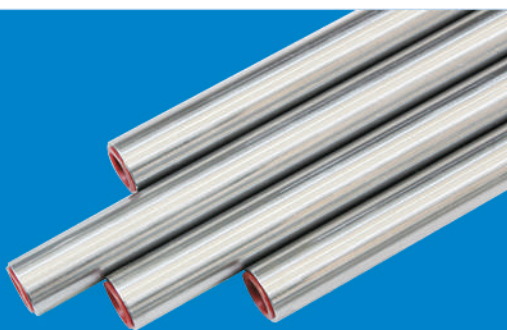


GLOBAL PRECISION STEEL TUBE

Quality Honesty Win-Win cooperation



Global Precision Steel Tube



www.qqtjmagg.com

www.global-steeltube.com





Content

Global Precision Steel Tube

About Us

01-04

Enterprise
Culture

05-06

Product

07-18

Quality
Assurance

19-20

Marketing
Service

21-24

01

About Us

Keep Strong and going on, self-discipline and social commitment



Xuzhou Global Precision Steel Tube Co.,Ltd develops and produces the high quality seamless steel tubes. As one of the leading manufacturers in China, confirming to DIN2391/C, EN10305 and SAE J524 standard. We develop customized tubes solutions for Automotive, engineering machinery, railway locomotive, ships and hydraulic systems, etc.

We focus on R & D and keep improving the quality of our tube, selects the high quality steel billet, and when the production of manufacturing, every process is strictly controlled and tested to insure quality. Our products benefit from very good bending and forming properties, and stand out through good adhesion and high ductility.

Our company is located in Xuzhou City, Jiangsu Province, which is only 2.5 hours from Shanghai. The factory covers an area of 68000 m², with many professional production lines and testing equipment. We have more than 300 employees, and our annual output is up to 18000 tons. Our products are covering many industry fields and accepted by customers abroad 60 countries.

We have set up a quality management system assuring the quality of all the produces and service provided.(IATF16949, ISO9001, SGS gained)

Welcome to visit our factory !!

Quality Honesty Win-win Cooperation

We always chase perfection in the challenging business society. Insisting on our faith and goal, keeping strong and going on.

We are looking forward to establishing win-win relationship with you.



03

Surrounded by trees and flowers, elegant environment

The company offers us a good working environment, which enables us to display our talent.

GARDEN PLANT



Modernized plant, advanced production devices, clean and orderly operation on the production site.

Show our company's comprehensive ability of producing & developing the top quality precision seamless steel tubes and tube assembly.



CLEAN AND ORGANIZED WORKPLACE



05

Our Team



Rich cultural life, relaxed and harmonious working environment , these are more effective to arouse the staff's working enthusiasm.
We will keep on contributing our efforts to the development of our company.



Excellent corporation culture create a successful business team



Training can improve the overall quality of employees, production efficiency and service levels. Enable two-way communication between enterprises and employees. Thus cultivating employees' professional dedication, innovation and social responsibility.

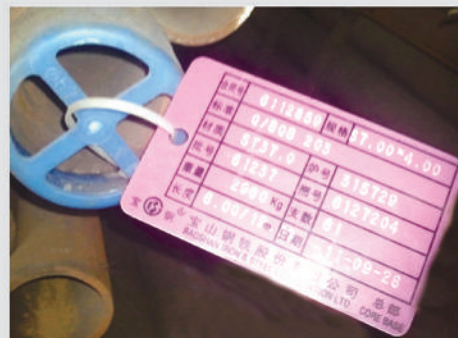


enhance our cohesion, execution and creativity.

07

Excellent Quality

committed to professional precision manufacturing

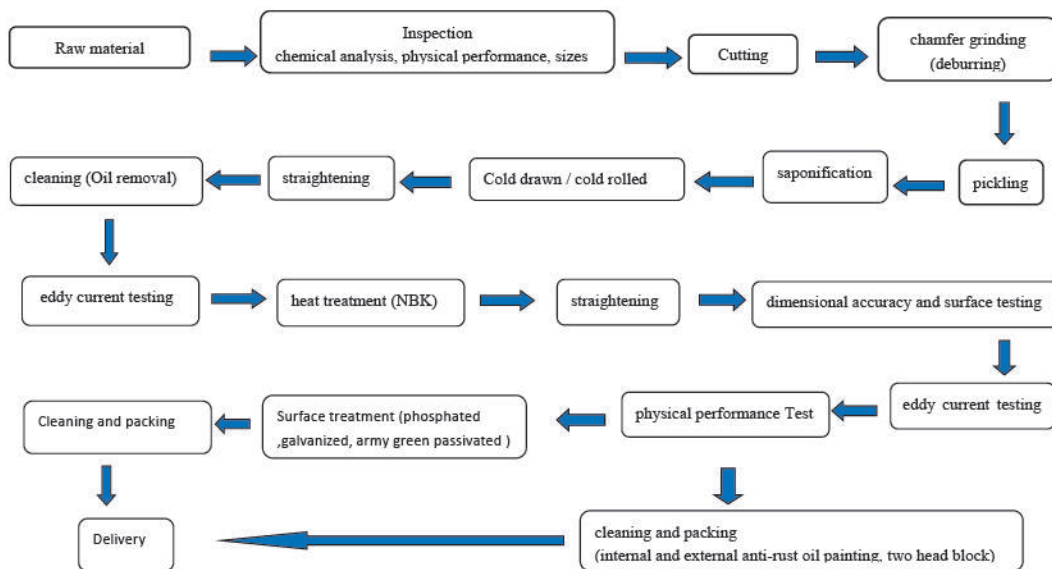


We choose the high quality steel billets, which have good chemical composition and mechanical properties. Including elongation, tensile strength, high pressure resistance should meet the requirements.

To ensure the high quality, all finished tubes are confirmed to DIN2391/C and EN10305 cold drawn/ cold rolled precision seamless steel tubes for hydraulic and pneumatic lines.



Work flow chart



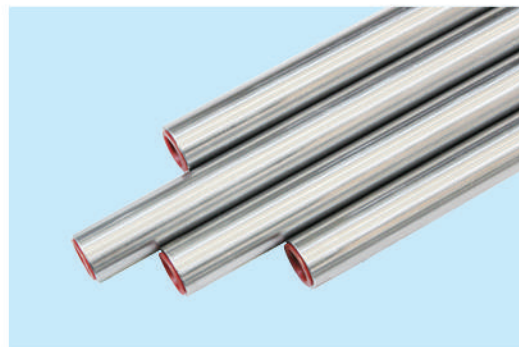
Technical characteristics

Standard:	DIN2391/C (EN10305-1), EN10305-4 (DIN2445), SAE J524
Grade:	E235 (ST35、ST37.4), E255 (ST45), E355 (ST52)
Heat treatment:	NBK (+N) normalized
Surface treatment:	Bright as cold drawn
Straightness:	10 μ m / meter
Dimensional tolerance:	according to EN10305-4



Feature

- No oxide layer on both sides of tube
- High pressure, no leakage
- High precision, smooth surface
- Cold bending without deformation
- No crack during flaring and flattening
- Anti-rust on inside and outside

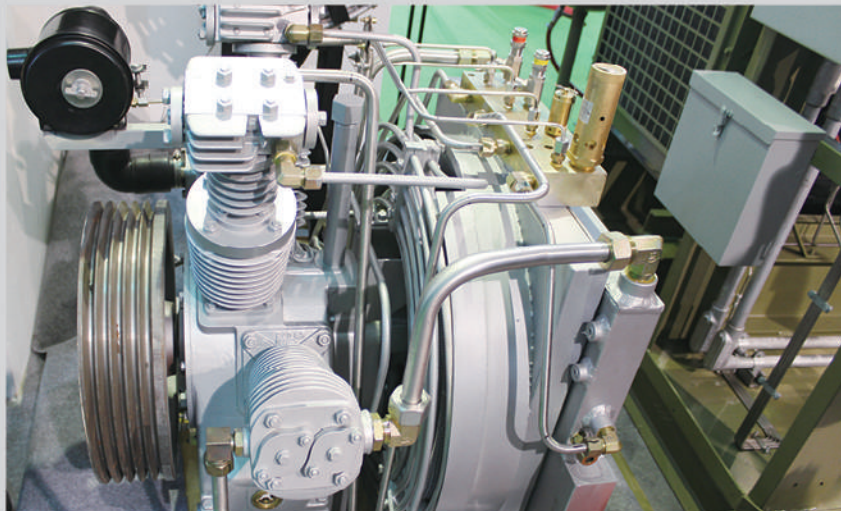
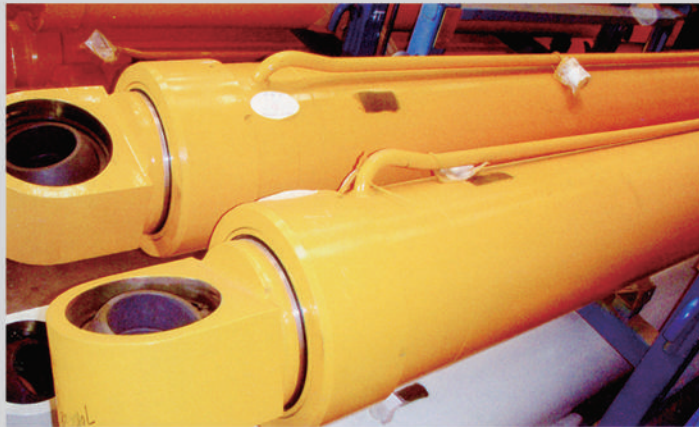


Delivery conditions

Goods:	NBK (+N)
Packaging:	Two ends sealed with plastic caps, bundling with plastic film and woven bag package. Each bundle max 1000kgs
Length:	Fixed 6m or as customer's requirement

Application

These tubes are widely used for hydraulic cylinder, diesel, hydraulic pump station and hydraulic system which areas require the steel tubes in high precision and cleanliness.



Technical characteristics

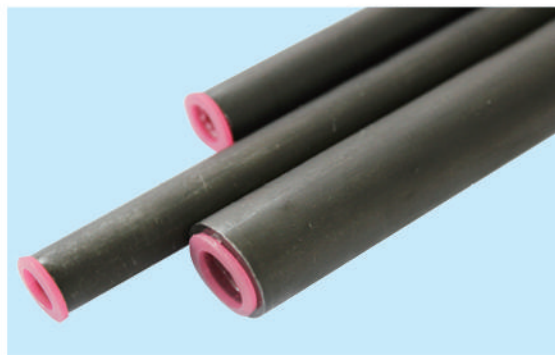
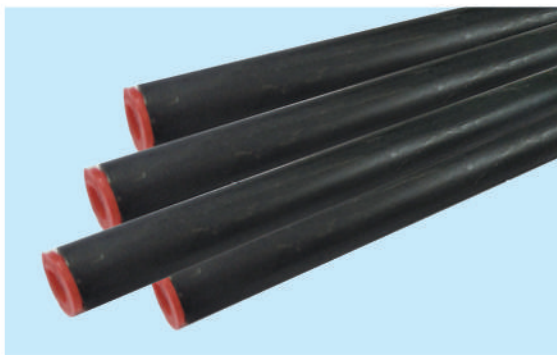
Standard:	DIN2391/C (EN10305-1), EN10305-4 (DIN2445), SAE J524
Grade:	E235 (ST35、ST37.4), E255 (ST45), E355 (ST52)
Heat treatment :	NBK (+N) normalized
Surface treatment:	Phosphated—internal and external phosphated coating
Straightness:	10 μ m / meter
Dimensional tolerance:	according to EN10305-4

Features:

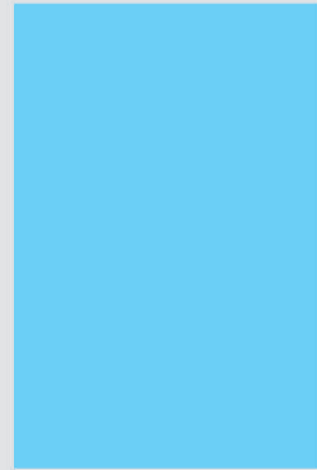
- Black phosphated on both sides of pipe
- The phosphated coating is delicate, high lubricity, uniform color
- Good looking in appearance
- High anti corrosion & anti rust
- Suitable for painting, and have strong adhesion

Delivery conditions

Goods:	NBK (+N)
Packaging:	Two ends sealed with plastic caps, bundling with plastic film and woven bag package. Each bundle max 1000kgs
Length:	Fixed 6m or as customer's requirement



They are applied in engineering machinery ,ships ,precision machinery ,hydraulic and pneumatic system .The surface of phosphating precision steel tube is especially suitable for painting or spray treatment. The paint surface has strong adhesion, the effect is excellent and beautiful, and the rust prevention effect is greatly enhanced.



Application



Technical characteristics

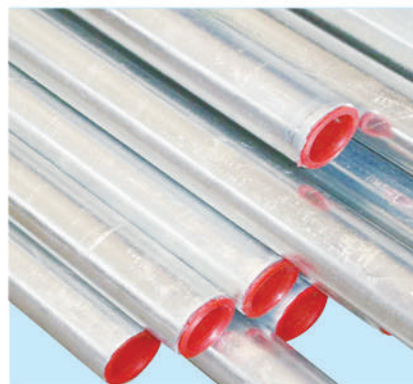
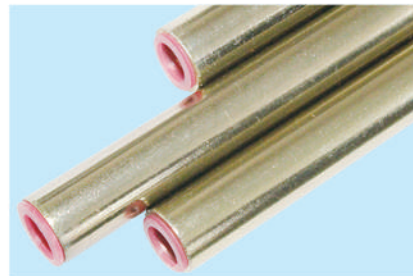
Standard:	DIN2391/C (EN10305-1), EN10305-4 (DIN2445), SAE J524
Grade:	E235 (ST35、ST37.4), E255 (ST45), E355 (ST52)
Heat treatment:	NBK (+N) normalized
Surface treatment:	galvanized--these tubes with a zinc coating of 8 to 12 μm and subsequently chrome VI-free passivated (yellow and silver)

Feature

- Cold galvanized (electrogalvanizing) in bright steel pipe
- Improve corrosion resistance in surface
- It will be strong anti corrosion & rust when passivated in zinc coating
- Color: white, yellow or colorful
- No zinc coating drops when bending

Delivery conditions

goods:	NBK (+N)
Packaging:	Two ends sealed with plastic caps, bundling with plastic film and woven bag package. Each bundle max 1000kgs
Length:	Fixed 6m or as customer's requirement



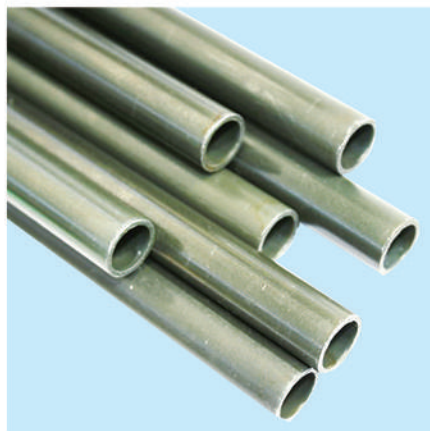
Application

They are applied in all kinds of vehicles, engineering machinery chassis, hydraulic piping system who require the tubes in good looking and high corrosion resistance.



Technical characteristics

Standard:	DIN2391/C (EN10305-1), EN10305-4 (DIN2445), SAE J524
Grade:	E235 (ST35、ST37.4), E255 (ST45), E355 (ST52)
Heat treatment:	NBK (+N) normalized
Surface treatment:	army green passivated
Straightness:	10 μ m / meter
Dimensional tolerance:	according to EN10305-1

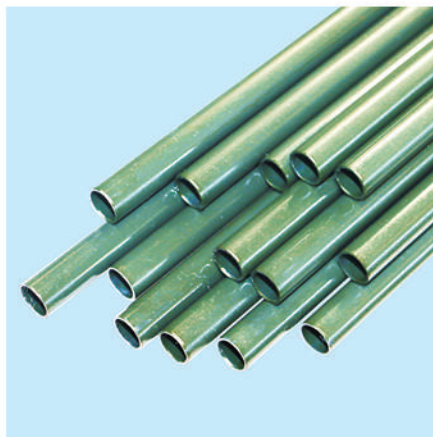


Feature

- High precision, smooth surface
- Strong anti rust/corrosion property
- No any corrosion after 220 hours' Salt spray test

Delivery conditions

goods:	NBK (+N)
Packaging:	Two ends sealed with plastic caps, bundling with plastic film and woven bag package. Each bundle max 1000kgs
Length:	Fixed 6m or as customer's requirement



Application

They are widely used in heavy duty truck, military industry, railway locomotive, engine filed and the gas road in special vehicle.

They can meet the requirements because of high precision in inside and outside and corrosion resistance.



17

Tube Assembly — Cutting Sleeve Type

Tube assembly is made up of steel tube, cutting sleeve and nut. It is a commonly device in hydraulic system to connect various hydraulic components and transfer hydraulic oil and gas.



Specification:

- Cutting sleeve and nuts are imported from germany— JS brand
- Maximum bending capacity: $\Phi 60 \times 5$
- High cleanliness in inside
- Surface treatment: galvanized, phosphated
- High pressure resistance, no leakage at connection points, easy to assemble and high efficiency



Application

Widely used in construction machinery, hydraulic system, special vehicle, hydraulic and pneumatic machinery industry.



18

Tube Assembly —welding type

Specification:

- TIG welding — mainly used for piping with high working pressure. The advantages are reflected in single side welding and both sides forming , high pressure resistance and high reliability.
- CO2 shielded arc welding—mainly used for piping with lower pressure. The advantages are easy operation, high efficiency and lower cost.



Application



19 Test Equipments



salt spray tester: test the corrosion resistance of coating (galvanized)

endoscope: inspect the cleanliness of inner wall



hydraulic universal testing machine: test the mechanical properties: tensile strength, yield strength, elongation

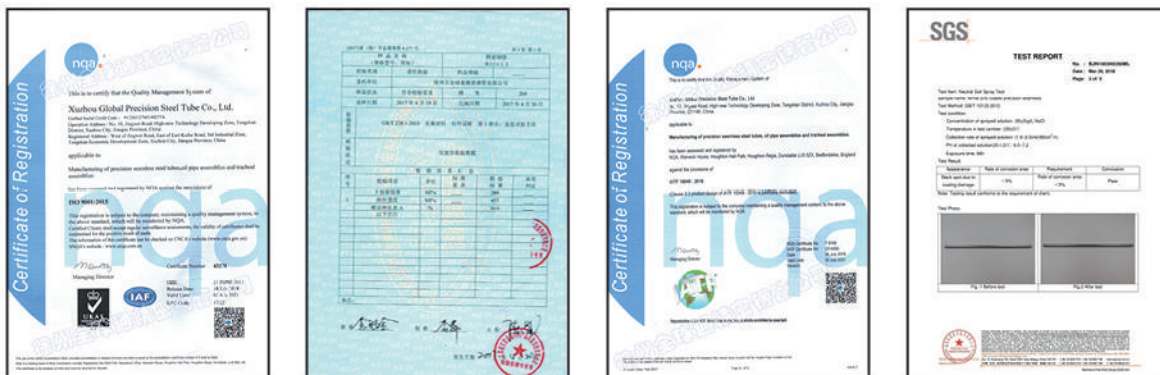
eddy current inspection: inspect the surface of steel tubes for defects



Optical emission spectrometer: chemical analysis on raw material and final products

Quality Assurance

- ISO 9001: 2015 for the Quality Management System
- IATF16949: 2016 required by the automotive customers for the quality management system is currently under development
- SGS—The Third Party testing for mechanical properties according to customer request
- SGS—The Third Party testing for salt spray test according to customer request



In addition we guarantee

Strict compliance with EN10305 standard including raw material, production, quality control, and after sale service

Same level of environment standard required in EU

21 Specification



Standard:

EN10305-4(DIN2445/2) , EN10305-1(DIN2391/C) ,GB/T3639, ASTM A179

Steel Grade:

E235 (ST35 ST37.4 10#) ,E255(ST45 20#) E355 (ST52 ST52.4 16Mn)

Size:

OD: 4-120mm, WT: 0.5-10mm, Length:Fixed 6m or as your requirement

Surface treatment:

Bright--polishing and do corrosion protection after NBK

galvanized--these tubes with a zinc coating of 8 to 12 μ m and subsequently chrome VI-free passivated (yellow and silver)

Phosphated--internal and external phosphated coating

Heat treatment:

+N (NBK) normalized

Straightness:

10 μ m / meter

COLD DRAWN/ROLLED SEAMLESS PRECISION STEEL TUBES CONFIRMING TO DIN2391;EN10305-1;EN10305-4											
OD	Thickness (mm)										
mm											
6	6*1	6*1.5	6*2								
8	8*1	8*1.5	8*2								
10	10*1	10*1.5	10*2								
12	12*1	12*1.5	12*2	12*2.5							
14	14*1	14*1.5	14*2	14*2.5	14*3						
15	15*1	15*1.5	15*2	15*2.5	15*3						
16	16*1	16*1.5	16*2	16*2.5	16*3						
18		18*1.5	18*2	18*2.5	18*3	18*3.5	18*4				
20		20*1.5	20*2	20*2.5	20*3	20*3.5	20*4				
22		22*1.5	22*2	22*2.5	22*3	22*3.5	22*4				
25			25*2	25*2.5	25*3	25*3.5	25*4				
28			28*2	28*2.5	28*3	28*3.5	28*4				
30			30*2	30*2.5	30*3	30*3.5	30*4	30*4.5	30*5		
32			32*2	32*2.5	32*3	32*3.5	32*4	32*4.5	32*5		
34			34*2	34*2.5	34*3	34*3.5	34*4	34*4.5	34*5	34*6	
35			35*2	35*2.5	35*3	35*3.5	35*4	35*4.5	35*5	35*6	
38			38*2	38*2.5	38*3	38*3.5	38*4	38*4.5	38*5	38*6	
40				40*2.5	40*3	40*3.5	40*4	40*4.5	40*5	40*6	
42				42*2.5	42*3	42*3.5	42*4	42*4.5	42*5	42*6	
45				45*2.5	45*3	45*3.5	45*4	45*4.5	45*5	45*6	
46				46*2.5	46*3	46*3.5	46*4	46*4.5	46*5	46*6	
48				48*2.5	48*3	48*3.5	48*4	48*4.5	48*5	48*6	
50				50*2.5	50*3	50*3.5	50*4	50*4.5	50*5	50*6	
54					54*3	54*3.5	54*4	54*4.5	54*5	54*6	
60					60*3	60*3.5	60*4	60*4.5	60*5	60*6	60*8

Note: 1. We can produce other specification as your requirements.
2. Surface treatment: Bright, galvanized (yellow, white, colorful), phosphated, army green passivation.



Tolerance

Outer Diameter	Allowable tolerance		special tolerance	
	GB/T3639	DIN2391	OD	WT
4mm-20mm	±0.10mm	±0.08mm	±0.05mm	±0.05mm
20mm-30mm	±0.10mm	±0.08mm	±0.08mm	±0.08mm
31mm-40mm	±0.15mm	±0.15mm	±0.10mm	±0.08mm
41mm-60mm	±0.20mm	±0.20mm	±0.15mm	±0.15mm
61mm-80mm	±0.30mm	±0.30mm	±0.20mm	±0.20mm
81mm-120mm	±0.45mm	±0.45mm	±0.30mm	±0.30mm

Chemical composition

Steel grade		C max.	Si max.	Mn max.	P max.	S max.	Al _{tot} min.
Name	Number						
E215	1.0212	0.10	0.05	0.7	0.025	0.015	0.025
E235	1.0308	0.17	0.35	1.2	0.025	0.015	—
E355	1.0580	0.22	0.55	1.6	0.025	0.015	—

Mechanical Properties

Steel grade		Yield strength ^a	Tensile strength	Elongation
Name	Number	R _{eH}	R _m	A
		min.	min.	min.
		MPa	MPa	%
E215	1.0212	215	290 to 430	30
E235	1.0308	235	340 to 480	25
E355	1.0580	355	490 to 630	22

Application

Engineering Machinery



Railway locomotive



Aircraft Vessel



Energy Field



Industry Dveices





Exporting our tubes to all over the world

Is our faith and goal which we insist on !!

We will fight for Xuzhou Global Company access to be a leader in this industry.

Global Precision Steel Tube

Marketing & Service

—Dedicated to building a high degree of strategic partnership with customers



Quality—Honesty——Win—Win Cooperation
Seek for excellent quality, cast on perfect products

We sincerely hope that the new and old customers to build good relations of cooperation
to create prosperity !!



Xuzhou Global Precision Steel Tube Co.,Ltd

ADD: No.11, Jingwei Rd, Economic Development Zone,
Tongshan,Xuzhou, Jiangsu Prov. China

P.C.: 221116

T e l: +86-516-83307968
+86-516-83307909

F a x: +86-516-83307955

E-mail: qqt8@globaltube.cn

Web: www.qqtjmgg.com
www.global-steeltube.com